

SERIES TF

TF160

TF180

TF200

MODEL	TF160	TF180	TF200
CUTTING WIDTH (mm)	1560	1760	1960
WEIGHT (Kg)	920	1020	1140
OIL PRESSURE (bar)	250	250	250
OIL FLOW (l/min)	100-150	100-150	100-150
NUMBER OF TOOLS	34	40	44
MAX CUTTING DIAMETER (mm)	100	100	100
DIMENSION A (mm)	1060	1060	1060
DIMENSION B (mm)	1960	2160	2360
DIMENSION C (mm)	1360	1360	1360



Pressure gauge to monitor constantly i pressure peaks.



Double bottom case for increase robustness and optimize the volume of cut.



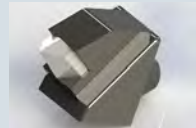
Interchangeable fixed teeth forestry rotor designed to cope to the heaviest jobs.



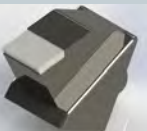
Back protection with chains.



Standard with 3m hydraulic hoses. Available as an **option**: set of hoses with customized lengths.



Plus replaceable tool with cutting edge in widia.



Standard replaceable tool with cutting edge in widia.



Replaceable anti-wear skids with generous dimensions.



Replaceable tool with double pointed and cutting edge in widia.



Available as an **option**: reducer of cutting depth that allows the rotor to maintain a constant number of revolutions and to preserve the life of the tool.



Blast chiller arch as standard, to prevent it from branches and shrubs cut from the machine fall over the skid steer.



Standard with coupling for skid-steer, **optional**: custom coupling.



Hydraulic piston motor inside the machine, assembled on extension with bearings to avoid premature wear. Final belt drive essential for applications where the powers transmitted become important, has the function of elastic joint preserving both the motor and the rotor from unexpected stresses.



Engine with anti-cavitation valve to preserve engine and excavator during travel stops.



Hydraulically adjustable front protection hatch. Electrically controlled 6-way valve as standard if not has a double auxiliary system.