

SERIES FFH

FFH110

FFH140



MODEL	FFH110	FFH140
CUTTING WIDTH (mm)	1080	1380
WEIGHT (Kg)	1150	1300
OIL PRESSURE (bar)	220-350	220-350
OIL FLOW (l/min)	130-180	150-200
NUMBER OF TOOLS	24	31
MAX CUTTING DIAMETER (mm)	250	250
DIMENSION A (mm)	905	905
DIMENSION B (mm)	1570	1870
DIMENSION C (mm)	1380	1380



Fluidbox for complete and safe engine management with anti-cavitation valve.



Back protection with double set of chains.



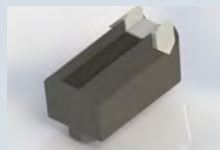
Replaceable anti-wear skids with a large surface of contact with the ground.



Generously thick case to increase the robustness and optimize the cutting volume. Internal lining in Hardox.



Standard with 3m hydraulic hoses. Available as an **option**: set of hoses with customized lengths.



Standard replaceable tool with cutting edge in width.



Plus replaceable tool with cutting edge in width.



Available as an **option**: standard attachment and pins with customized measurements.



Available as an **option**: reducer of cutting depth that allows the rotor to maintain a constant number of revolutions and to preserve the life of the tool.



Variable displacement piston engine, for correct torque delivery based on power demand. When the workload gets intense, the control system hydraulic increases the displacement and consequently the torque, avoiding work interruptions to make the rotor regain revs. Motor protected by the frame and mounted on an extension with bearings. Final drive belt of adequate dimension.



Forestry rotor with interchangeable fixed teeth designed for heavy jobs.



Front protection with hydraulically adjustable door. Available as an **option**: solenoid valve to control the jack with the main line.