

SERIES D

D110

D130

D160

MODEL	D110	D130	D160
CUTTING WIDTH (mm)	1130	1330	1630
WEIGHT (Kg)	450	470	530
OIL PRESSURE (bar)	220	220	220
OIL FLOW (l/min)	60-90	60-90	80-130
NUMBER OF KNIVES	36	48	48
NUMBER OF HAMMERS	12	16	16
MAX CUTTING DIAMETER (mm)	75	75	75
DIMENSION A (mm)	970	970	970
DIMENSION B (mm)	1395	1595	1895
DIMENSION C (mm)	600	600	600



Predisposition of holes for the positioning of the attachment along the entire length car.



Fluidbox for complete and safe engine management, with shockproof maximum valve, anti-cavitation system and flow regulation to set the rotor speed correctly.



Optional dedicated oscillating support available.



Replaceable wear-resistant skids.



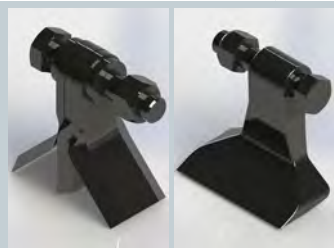
Double bottom case to increase strength and optimize volume cutting.



Available as an **option**: standard attachment and pins with customized measurements.



Standard with 2m hydraulic hoses.
Available as an **option**: set of hoses with customized lengths.



- Triple knives
- Hammer



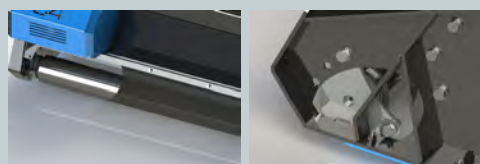
Motor mounted on extension with bearings to avoid premature wear of the engine, with carter for impact protection. Final transmission of the belt, essential for applications where the powers transmitted begin to become consistent, it has the function of elastic joint preserving both the motor and the rotor from unexpected stresses.



The machine comes standard in a two-pipe configuration, the fluidbox will manage the flow of oil coming from the engine drain. In case the back pressure at the discharge is greater than 8 bar it is possible to add the 3 three-blade drainage tube.



Rotor can be equipped with three-blade knives for one higher shredding capacity and lower demand for power. Rotor can be equipped with hammers to tackle in branches and shrubs safety up to 75 mm.



Rear support roller adjustable in 3 positions for cutting height adjustment. Protection strip rear in anti-wear rubber.



Front protection with chains, adjustable in two positions for one easy maintenance.