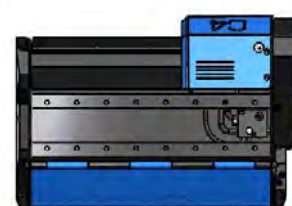
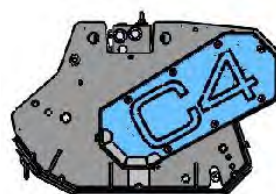
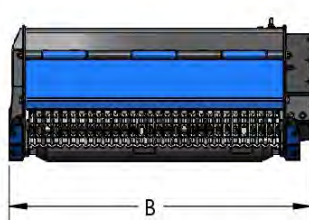
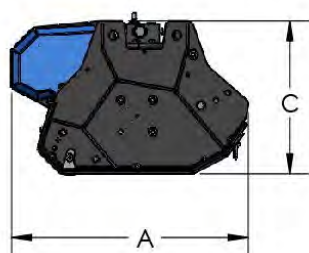


SERIES C

C90

C110

MODEL	C90	C110
CUTTING WIDTH (mm)	968	1168
WEIGHT (Kg)	310	350
OIL PRESSURE (bar)	230	230
OIL FLOW (l/min)	40-80	40-80
NUMBER OF KNIFES	36	48
NUMBER OF HAMMERS	12	16
MAX CUTTING DIAMETER (mm)	60	60
DIMENSION A (mm)	785	785
DIMENSION B (mm)	1135	1335
DIMENSION C (mm)	715	715



Fluidbox for a complete and safe management of the engine with maximum shockproof valve, anti-cavitation system and flow regulation to set the rotor speed correctly.



Predisposition of holes on the upper part of the machine that allow customized positioning of the saddle for 6 positions of the model C90 and 8 positions for model C110.



Self-leveling support as standard that allows an oscillation equipment to accommodate the unevenness of the ground.



Replaceable wear-resistant skids.



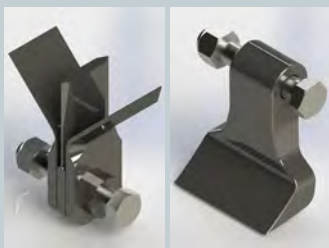
Double bottom case to increase strength and optimize volume cutting.



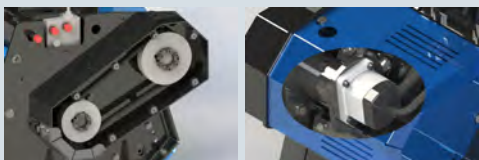
Standard with 2m hydraulic hoses.
Available as an **option**: set of hoses with customized lengths.



Available as an **option**: standard attachment and pins with customized measurements.



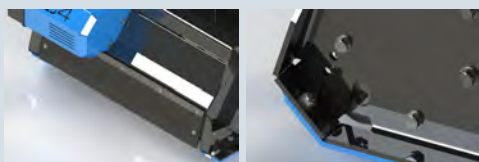
- Triple knives
- Hammer



Motor mounted on support with bearings to avoid premature wear of the engine, with casing for impact protection. Belt transmission, essential for applications where the transmitted powers begin to become consistent, has the function of an elastic joint preserving both the motor and the rotor from stress unexpected events.



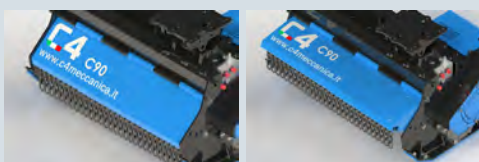
Rotor can be equipped with three-blade knives for one higher shredding capacity and lower demand for power. Rotor can be equipped with hammers to tackle in safety branches and shrubs up to 60 mm in diameter.



Rear protection with adjustable support roller in three positions for cutting height adjustment. Rear protection strip in wear-resistant rubber.



The machine comes standard in a two configuration hoses, the fluidbox will manage the oil flow coming from the engine drain. In the case of the exhaust back pressure is greater than 8 bar. It's possible to provide the third drainage pipe for the discharge direct to the tank.



Front protection with chains adjustable in three positions for one easy maintenance.