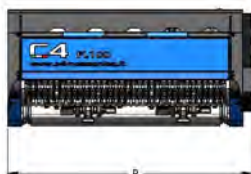
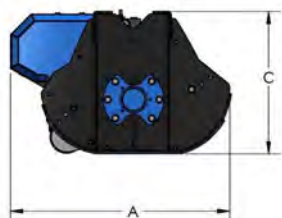


# SERIES FL

## FL90 - FL100

HYDRAULIC MULCHER  
WITH RETRACTABLE  
HAMMERS EXCAVATORS  
FROM 5 TO 9 TONS

MODEL	FL90	FL100
CUTTING WIDTH (mm)	908	1008
WEIGHT (Kg)	360	450
OIL PRESSURE (bar)	250	250
OIL FLOW (l/min)	40-70	60-80
NUMBER OF HAMMERS	12	16
MAX CUTTING DIAMETER (mm)	100	100
DIMENSION A (mm)	945	945
DIMENSION B (mm)	1090	1190
DIMENSION C (mm)	610	610



Fluidbox for complete and safe engine management, with anti-cavitation system and flow regulation to set the rotor speed correctly.



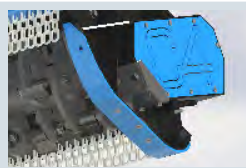
Available as **optional**: hydraulically operated adjustable front protection.



Predisposition of holes on the top part of the machine, that allow the positioning of the support along all the top.



Available as an **option**: standard attachment and pins with customized measurements.



Rear protection with chains and wear-resistant skid.



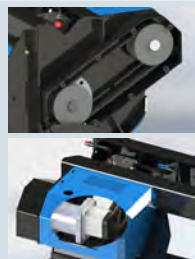
Double bottom case in hardox to increase the robustness and optimize the cutting volume.



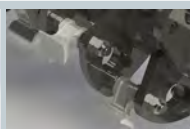
Standard with 3m hydraulic hoses. Available as an **option**: set of hoses with customized lengths.



Reversible symmetrical hammer.



Piston motor with external drain as standard, protected by casing in case of impacts, supported on extension with bearings to avoid a premature wear. Belt drive, essential for applications where the powers transmitted begin to become consistent, has the function of elastic joint preserving both motor which rotor from unexpected shocks.



Rotor with retractable hammers, in open configuration, for weight reduction and greater cutting efficiency. Hammers holders help generate more swirl inside the case favouring the recirculation of material and greater mulching action.



Front protection with chains, adjustable on 4 positions for easy maintenance.