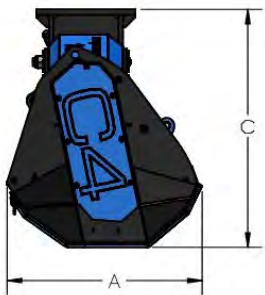


# SERIES FL

## FL210

WITH RETRACTABLE  
HAMMERS EXCAVATORS  
FROM 18 TO 25 TONS

MODEL	FL210
CUTTING WIDTH (mm)	2100
WEIGHT (Kg)	1470
OIL PRESSURE (bar)	220-250
OIL FLOW (l/min)	140-200
NUMBER OF HAMMERS	32
MAX CUTTING DIAMETER (mm)	100
DIMENSION A (mm)	883,7
DIMENSION B (mm)	2735,4
DIMENSION C (mm)	1071



Fluidbox for complete and safe engine management, equipped with valve anti-cavitation and relief valve, the machine comes standard with the third drainage pipe.



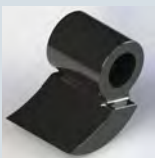
Rear protection with chains.



Case made with thick sheet metal, double bottom, with coat Hardox interior and upper reinforcements in the engine compartment.



Standard with 3m hydraulic hoses.  
Available as an **option**: set of hoses with customized lengths.



Hammer



Available as an **option**: standard attachment and pins with customized measurements.



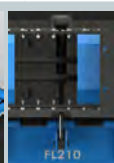
Piston engine in the upper position and inside the machine to protect it from bumps and debris. Motor extension on bearings to avoid premature wear. Belt drive with 1:1 ratio to maximize the transmitted power acts as an elastic joint preserving both the motor and the rotor from stress unexpected events.



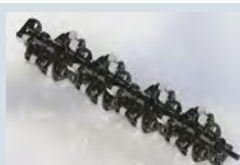
Predisposition of holes for positioning customized support on 4 positions. Modular upper covers that do not need to be replaced when changing the position of the support.



Replaceable wear-resistant skid with a large surface of support.



Available as an **option**: front protection with hydraulically adjustable door, available as an **optional**: solenoid valve to control the jack with the line principal.



Special open rotor configuration, with retractable hammers to reduce weight and inertia. The hammers supports are lightened and shaped for minimize impacts with stones and objects unexpected events.