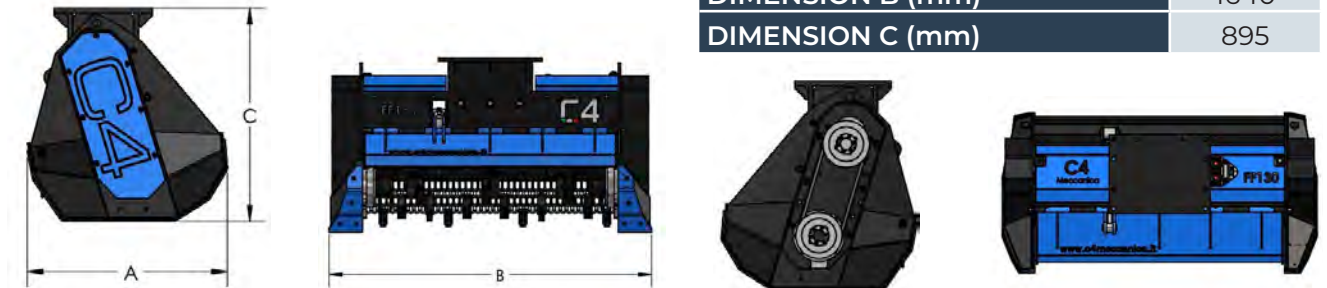


SERIES FF

FF130

| MODEL | FF130 |
|---------------------------|---------|
| CUTTING WIDTH (mm) | 1300 |
| WEIGHT (Kg) | 710 |
| OIL PRESSURE (bar) | 250 |
| OIL FLOW (l/min) | 100-150 |
| NUMBER OF TOOTH | 26 |
| MAX CUTTING DIAMETER (mm) | 250 |
| DIMENSION A (mm) | 810 |
| DIMENSION B (mm) | 1640 |
| DIMENSION C (mm) | 895 |



Anti-cavitation valve to avoid damage to the hydraulic during stopping system.



Back protection with chains.



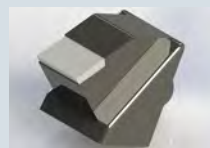
Replaceable anti-wear skids with a large surface of contact with the ground.



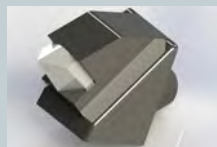
Generously thick case to increase the robustness and optimize the cutting volume. Internal lining in Hardox.



Standard with 3m hydraulic hoses. Available as an **option**: set of hoses with customized lengths.



Standard replaceable tool with cutting edge in widia.



Plus replaceable tool with cutting edge in widia.



Available as an **option**: standard attachment and pins with customized measurements.



Replaceable tool with double pointed and cutting edge in widia.



Available as an **option**: reducer of cutting depth that allows the rotor to keep a constant number revolutions and to preserve tool life.



Piston engine in the upper position and inside the machine to protect from bumps and debris. Motor extension on bearings to avoid premature wear. Transmission belt final with 1:1 ratio to maximize power transmitted, has the function of an elastic joint preserving both the motor that the rotor from unexpected stresses.



Forestry rotor with interchangeable fixed teeth designed for heavy jobs.



Hydraulically operated front protection. Available as an **option**: solenoid valve to control the jack with the main line.