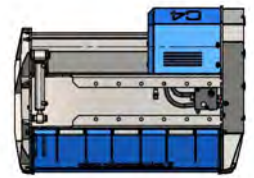
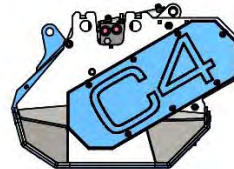
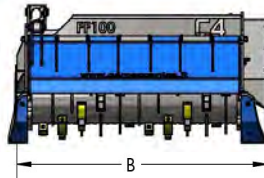
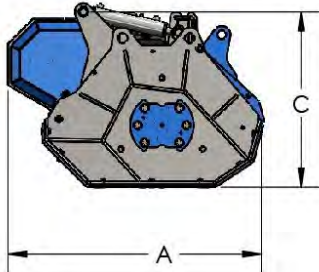


SERIES FF

FF80

FF100

MODEL	FF80	FF100
CUTTING WIDTH (mm)	800	1000
WEIGHT (Kg)	390	460
OIL PRESSURE (bar)	220-250	220-250
OIL FLOW (l/min)	60-80	60-80
NUMBER OF TOOLS	16	20
MAX CUTTING DIAMETER (mm)	150	150
DIMENSION A (mm)	890	890
DIMENSION B (mm)	1050	1250
DIMENSION C (mm)	605	605



Fluidbox for one complete and safe engine management with relief valve, anti-cavitation system e flow regulation for set the number of revolutions of the rotor.



Double bottom case for increase robustness and optimize the volume of cut, with lining Hardox interior.



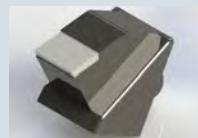
Support skids with replaceable anti-wear plates.



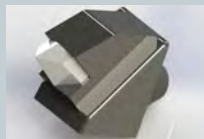
Predisposition of holes for customize the location of the attack.



Standard with 3m hydraulic Hoses. Available as an **option**: set of hoses with customized lengths.



Standard replaceable tool with cutting edge in width.



Plus replaceable tool with cutting edge in width.



Available as an **option**: standard attachment and pins with customized measurements.



Replaceable tool with double pointed and cutting edge in width.



Available as an **option**: reducer of cutting depth that allows the rotor to keep a constant number revolutions and to preserve tool life.



Piston motor driven on extension with bearings to avoid premature wear of the engine with casing for the impact protection. Belt drive, essential for applications where the powers transmitted begin to become consistent, has the function of an elastic joint preserving both the motor that the rotor from unexpected impacts.



Fixed tooth rotor with interchangeable tools designed for heavy jobs.



Hydraulically operated front protection. Adjustable rear protection with chains.